



LE-TEHNIKA d.o.o. , Šuceva 27, 4000 Kranj
tel: 04 204 2121, fax: 04 204 2122
e-mail: telephone@le-tehnika.si
www.le-tehnika.si



Catalogue 2010

fiber optic system

Index

FIBER OPTIC SYSTEM

Fiber optic patch cord	03 - 04
PLC splitter	05
Fiber optic coupler	06
Fiber optic pigtail	07
Fiber optic connector	08
Fiber optic attenuator	09
Fiber optic adapter	10
Wall mounted terminal box	11
Rack mounted patch panel.....	12
Optical distribution frame(ODF).....	13
Optical distribution frame	14
Fiber optic closure dome type.....	15
Fiber optic closure horizontal type...	16
Media converter	17
Loop back assembly.....	18
Test equipment.....	19
Indoor fiber cable	20
Outdoor fiber cable	21
Armored fiber cable	22 - 23

Fiber optic patch cord



TYPE

- Patch cord SC SM Simplex
- Patch cord SC MM Simplex
- Patch cord SC SM Duplex
- Patch cord SC MM Duplex
- Patch cord SC/APC SM Simplex

TYPE

- Patch cord LC SM Simplex
- Patch cord LC MM Simplex
- Patch cord LC SM Duplex
- Patch cord LC MM Duplex
- Patch cord LC/APC SM Simplex



TYPE

- Patch cord ST SM Simplex
- Patch cord ST MM Simplex
- Patch cord ST SM Duplex
- Patch cord ST MM Duplex
- Patch cord ST/APC SM Simplex



TYPE

- Patch cord FC SM Simplex
- Patch cord FC MM Simplex
- Patch cord FC SM Duplex
- Patch cord FC MM Duplex
- Patch cord FC/APC SM Simplex



TYPE

- Patch cord MTRJ SM/MM Duplex
- Patch cord MU SM/MM Simplex
- Patch cord SMA MM Simplex
- Patch cord DIN SM Simplex
- Patch cord D4 SM Simplex
- Patch cord ESCON MM Duplex



Fiber optic patch cord



SPECIFICATIONS

Connector: SC, LC, ST, FC, MU, MT-RJ, DIN, D4, SMA & E2000

Polishing: PC, UPC & APC

Single mode fiber: ITU-TG.652D

Multi mode fiber: ITU-TG.651

Standard: Telcordia GR-326-CORE

Standard housing, ceramic ferrule or plastic ferrule

Cable diameter: 0.9mm, 1.6mm, 1.8mm, 2.0mm, 2.4mm, 3.0mm

Fiber type: 9/125um, 62.5/125um & 50/125um

Insertion loss: SM Less than 0.3dB, MM Less than 0.3dB

Return loss

PC SM larger than 45dB

UPC SM larger than 50dB

APC SM larger than 60dB

PC MM larger than 20 dB

Repeatability: Less than 0.2 dB

Changeability: Less than 0.1 dB

Operating temperature range: -40 ~ 80 °C

Storage temperature range: -40 ~ 80 °C

Tensile strength: 100N

Min. bending radius: 35mm



PLC splitter

APPLICATION

FTTX system
 LAN, WAN and Metro networks
 Analog/Digital passive optical networks
 CATV Networks
 Other applications in fiber optic systems

STANDARD

Telcordia GR-1209-CORE
 Telcordia GR-1221-CORE

KEY FEATURES

Compact design
 Low insertion loss and low PDL
 High reliability
 High channel counts
 Wide wavelength range
 Large operating temperature range
 Customized packaging and configuration
 Full Telcordia GR 1209/1221 qualifications



The single-mode planar lightwave circuit splitter (PLCS) are developed based on unique silica glass waveguide process with reliable precision aligned fiber pigtail in a miniature package, it provides a low cost light distribution solution with small form factor and high reliability. PLCS devices have high return loss and excellent uniformity over a wide wavelength range from 1260nm to 1620nm. PLCS devices have standard configurations of 1X4, 1X8, 1X16 and 1X32 configurations, as well as customized structures of 2X16, 2X32 and 2X64.

These products meet or exceed Telcordia GR-1209-CORE and Telcordia GR-1221-CORE reliability qualification requirements.

Port Configuration	1X4	1X8	1X16	1X32
Fiber type	SMF-28			
Operation wavelength	1260nm ~ 1620nm			
Insertion loss	≤7.25dB	≤10.8dB	≤14.0dB	≤17.4dB
Uniformity	≤0.5dB	≤0.8dB	≤1.2dB	≤1.5dB
Polarization dependent loss	0.2dB			
Return loss	50dB			
Directivity	55dB			
Operating temperature	-40 °C to +85 °C			
Storage temperature	-60 °C to +85 °C			
Package dimension	40X3.9X3.2mm	40X3.9X3.2mm	40X3.9X3.2mm	50X5.9X3.2mm

Fiber optic coupler



FEATURE

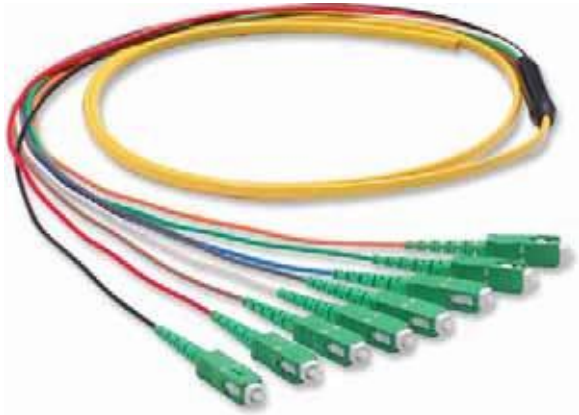
- Low insertion Loss
- High directivity
- High stable and reliable
- Polarization Insensitivity
- Flexible Packaging

APPLICATION

- Long Haul Telecommunication
- Fiber in the loop (FITL)
- Local Area Networks (LAN)
- Cable TV & video distribution
- Passive optical networks (PON)



Fiber optic pigtail



SPECIFICATIONS

Connector type: SC,ST,FC, LC, MTRJ,D4, DIN, E2000,ESCON, MPO, FDDI,MU

Polishing: PC, UPC,APC

Single mode fiber:ITU -T G.652 D

Multi mode fiber:ITU -T G.651

Standard: Telcordia GR-326-CORE

Standard housing, ceramic ferrule or plastic ferrule

Cable diameter: 0.9mm, 1.6mm, 1.8mm, 2.0mm,2.4mm, 3.0mm

Fiber type: 9/125um,62.5/125um or 50/125um

SPECIFICATIONS

Insertion loss: SMLess than 0.3dB & MMLess than 0.3dB

Return loss: SM/PClarger than 45dB; SM/UPC largertan 50dB; SM/APClarger than 60dB;PC MM largertan 20dB

Repeatability: Less than0.2 dB

Changeability: Less than0.1 dB

Operating temperature range:-40 ~ 80 ℃

Storage temperature range:-40 ~ 80 ℃

Tensile strength: 100N

Min. bending radius:35mm

Fiber optic connector



TYPE

- Connector SCSM 0.9/2.0/3.0mm
- Connector SCMM 0.9/2.0/3.0mm
- Connector SC/APCSM 0.9/2.0/3.0mm



TYPE

P/N

- Connector LCSM 0.9/2.0/3.0mm
- Connector LCMM 0.9/2.0/3.0mm
- Connector LC/APCSM 0.9/2.0/3.0mm



TYPE

P/N

- Connector STSM 0.9/2.0/3.0mm
- Connector STMM 0.9/2.0/3.0mm
- Connector ST/APCSM 0.9/2.0/3.0mm

TYPE

P/N

- Connector FCSM 0.9/2.0/3.0mm
- Connector FCMM 0.9/2.0/3.0mm
- Connector FC/APCSM 0.9/2.0/3.0mm



TYPE

- Connector MTRJSM/MM duplex male
- Connector MTRJSM/MM duplex female
- Connector MUSM/MM simplex
- Connector SMAMM simplex
- Connector DINSM simplex
- Connector D4SM simplex
- Connector ESCONMM duplex

Fiber optic attenuator



TYPE

- Attenuator SC SM Plug
- Attenuator SC/APC SM Plug
- Attenuator LC SM Plug
- Attenuator LC/APC SM Plug
- Attenuator ST SM Plug
- Attenuator ST/APC SM Plug
- Attenuator FC SM Plug
- Attenuator FC/APC SM Plug
- Attenuator MU SM Plug

TYPE

- In-line attenuator 3.0mm JFAT-L3
- In-line attenuator 0.9mm JFAT-L9



TYPE

- Attenuator SC Fixed
- Attenuator LC Fixed
- Attenuator FC Fixed

TYPE

- Variable attenuator FC



Fiber optic adapter



TYPE

- AdapterLC SM Simplex
- AdapterLC SM Duplex
- AdapterLC/APC SM Simplex
- AdapterLC/APC SM Duplex
- AdapterLC MM Simplex
- AdapterLC MM Duplex
- AdapterLC SM Quadplex
- AdapterLC MM Quadplex



TYPE

- Bare fiberadapter FC SM/MM1
- Bare fiberadapter FC SM/MM2
- Bare fiberadapter FC SM/MM3



TYPE

- AdapterSC SM Simplex
- AdapterSC MM Simplex
- AdapterSC SM Duplex
- AdapterSC MM Duplex
- AdapterSC/APC SM Simplex
- AdapterSC/APC SM Duplex



TYPE

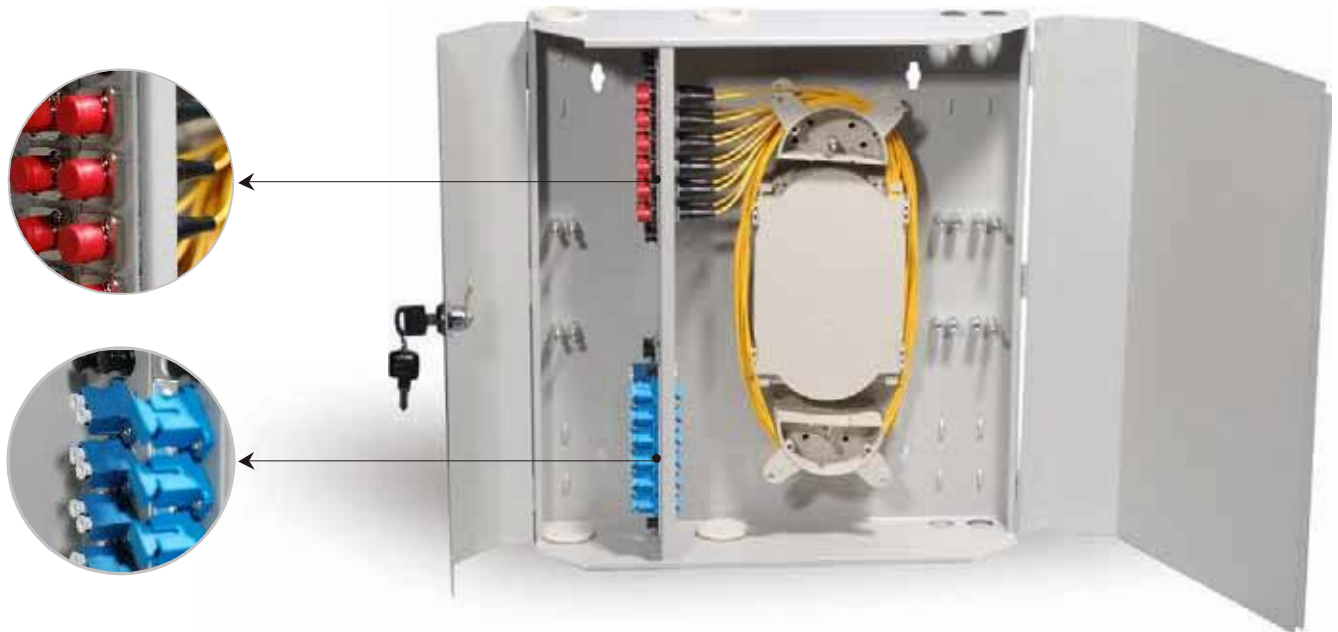
- AdapterST SM Simplex
- AdapterST MM Simplex
- AdapterST/APC SM Simplex
- AdapterST/APC SM Duplex
- AdapterSM Conversion Duplexmetal
- AdapterSM Conversion Duplexplastic



TYPE

- AdapterSC-ST SM Duplexmetal
- AdapterSC-ST SM Simplexplastic
- AdapterSC-ST SM Simplexmetal
- AdapterSC-ST SM Duplexplastic
- AdapterSC-FC SM Simplexplastic
- AdapterSC-FC SM Duplexplastic
- AdapterSC-FC SM Simplexmetal
- AdapterSC-FC SM Duplexmetal
- AdapterSC-FC APCSM Simplex
- AdapterFC-ST SM Simplexplastic
- AdapterFC-ST SM Duplexplastic
- AdapterFC-ST SM Simplexmetal
- AdapterFC-ST SM Duplexmetal

Wall mounted terminal box



Patch Box (Wall mounted) 24Core400X350X75mm

KEY FEATURE

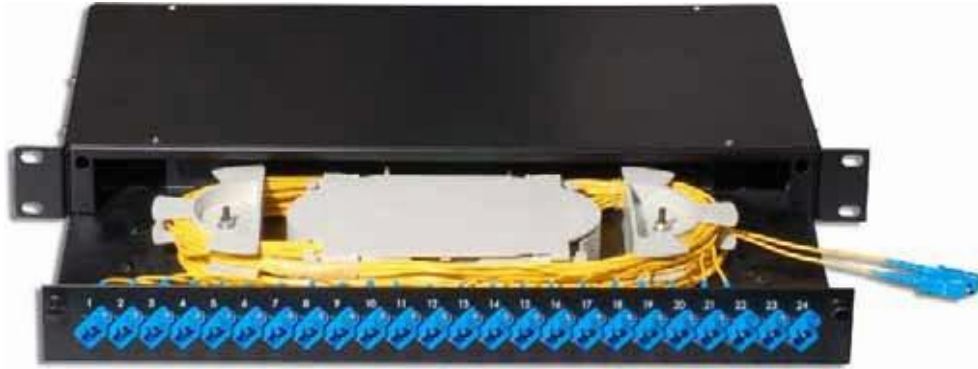
- Workability
- Widen working space
- Splicing, slack storage and distribution
- Adopts the imported lock
- Individual distribution panel for efficient work
- Steel plates and aluminum alloy
- Suitable for both loose tube and ribbon cable management
- Suitable for inserting installation of SC, FC, ST and LC adapter
- Integrated fiber, pigtail and cable management
- Apply to extensive

APPLICATION

In fiber access, it is designated for fiber termination, protection and distribution



Rack mounted patch panel



FEATURES

The shell is high intensified & insulated material, thus having excellent mechanical performance

It is solid and durable

Fiber input: 4 ports

Adapters output: 12 cores or 24 cores or 48 cores

Strength core and shell was insulation, add with grounding lead

Suitable for inserting installation of SC, FC, ST and LC adaptor

Full accessories for convenient operations



PERFORMANCE

Excellent design

maximum cores: 48

fiber lead, grounding and perfect fix up, reliable

Pigtails are reliable and perfect protection

Apply to extensive field

Convenient operations and maintenance



SPECIFICATIONS

Environment temperature: -40 ~ +80 °C

Relative humidity: =85%(30 ~)°C

Atmosphere pressure: 70~106KPa

Insulated Resistance: =210M/500V (DC)

Intensity = 15kv(DC)/1min, no spark-over and no flying arc

Fiber bending radius guaranteed more than 40mm

Application: It is applicable for straight-through connection and diverged connection in aerial layout.



REMARKS

The above three styles rack mounted fiber distribution box can comply with 48 ports; but the fiber pigtail diameter will be 0.9

mm only.

Optical distribution frame(ODF)



KEY FEATURES

Workability

Widen working space

Individual distribution panel for efficient work

Steel Plates and Aluminum Alloy

Suitable for inserting installation of SC, FC, ST and LC adaptor

Front and rear covers can be opened, It is convenient for Fiber connecting, supervising and maintaining

All kinds of types and specifications are available.

12-CORE FUSION SPLICING AND DISTRIBUTING MODULE

KEY FEATURES

Adaptor installation and fusion splicing points fixed in the module

Available for ribbon and common cables.

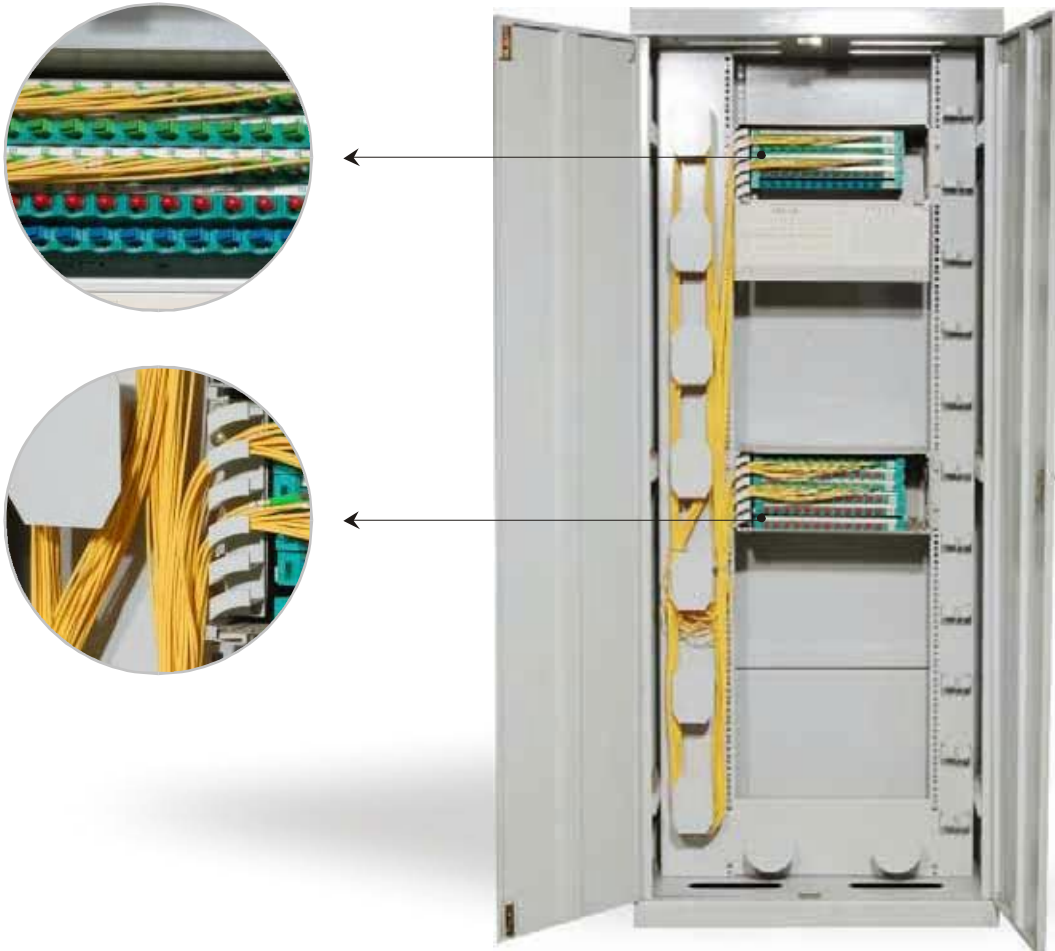
Fusion splicing and distributing can be operated in the same working panel.

Install adaptor respectively.



Name	Capacity	P/N No .	Dimension(mm)
Drawer style ODF unit	12 Cores	JFOPP-D12	482 X300X 45
Drawer style ODF unit	24 Cores	JFOPP-D24/36	482 X300X 90
Drawer style ODF unit	36 Cores	JFOPP-D24/36	482 X300X 90
Drawer style ODF unit	48 Cores	JFOPP-D48	482 X300X 135
Drawer style ODF unit	72 Cores	JFOPP-D72	482 X300X 180
Drawer style ODF unit	96 Cores	JFOPP-D96	482 X300X 225

Optical distribution frame



FEATURES

Aluminum-based cabinets with static-sprayed surface, nice appearance

All front access

Can be installed against wall or back to back so that optimizing space

Modular structure

Suitable for ribbon and non-ribbon optical cables

Suitable for inserting adapters of FC, SC, LC and ST (additional flange)

30° oblique installation of adapters, preventing eyes from laser and ensure the bend radius of the optical patch cords

Reliable stripping, protecting, fixing and grounding devices for fiber cables

Fiber bending radius guaranteed more than 40mm at any place

Accomplishing scientific management for optical patch cords with several groups of passing-fiber units

Cable entry top and bottom realized, by easy adjustment of cable fixed group unit

Complete and reliable grounding system provided

Clear and complete markers

Fiber optic closure dome type



KEY FEATURES

The box adding-resistant in imported high tensile construction plastic out-faster is made up of stainless steel.

Overlap structure in splicing tray easy to install

Suitable for ordinary fiber and ribbon fiber

Perfect leak proofness and fine function

Perfect and reliable sealing operations

Fiber bending radius guaranteed more than 40mm

Full accessories for convenient operations

Fiber optic splice tray can be used repeatedly

High reliability

For aerial and direct buried applications

SPECIFICATIONS

Temperature: -40 °C to +80 °C

Atmosphere: 70 to 106kpa

Sealing property at normal temperature:

Internal pressure: 70KPa, without decrease in 72 hours

High temperature sealing property:

Internal pressure: 70KPa, without decrease in 168 hours at 60 degree

Insulated resistance: $>2 \times 10^4 M \Omega$

Intensity: 15KV (DC) not being broken down, has no flying arc.

Additional Loss: No additional loss when optic fibers are wound in the splice trays

The aging time of the material of the enclosure is beyond 20 years



Fiber optic closure horizontal type



KEY FEATURES

- The box adding-resistant in imported high tensile construction plastic out-faster is made up of stainless steel.
- Overlap structure in splicing tray easy to install
- Suitable for ordinary fiber and ribbon fiber
- Perfect leak proofness and fine function
- Perfect and reliable sealing operations
- Full accessories for convenient operations
- Fiber optic splice tray can be used repeatedly
- High reliability
- For aerial, and direct buried applications



SPECIFICATIONS

- Temperature: -40 °C to +80 °C
- Atmosphere: 70 to 106 kPa
- Sealing property at normal temperature: Internal pressure: 70 KPa, without decrease in 72 hours
- High temperature sealing property: internal pressure: 70 KPa, without decrease in 168 hours at 60 degree
- Insulated resistance: $>2 \times 10^4 M\Omega$
- Intensity: 15KV (DC) not being broken down, has no flying arc.
- Additional Loss: No additional loss when optic fibers are wound in the splice trays
- The aging time of the material of the enclosure is beyond 20 years



Media converter



CONFIGURATION

Single mode or multi-mode

LAN port speed: 10/100M, 10/100/1000M or 1000M

Internal or external power supply

Wavelength: MM 850nm and 1300nm; SM 1310nm and 1550nm

Transmission distance: MM 350m-5km; SM 20km-120km

Fiber Port: SC, ST, LC and FC are available

Fiber type: MM 50/125um or 62.5/125um SM 9/125um



FEATURES

Standard: IEEE 802.3, IEEE 802.3u, IEEE 802.3x, IEEE 802.3ab, IEEE 802.3z

Auto-detection and half/full duplex transfer mode

Easy-to-view LED indicators provide status to easily monitor network activity

Easily for setting and debugging

Standalone type and card type are available and all compliant with Rack

Lightning proof and Broadcast-Storm proof

Different ports configuration can be customized

Operation temperature: 0 ~ 70 °C

Storage temperature: -40 ~ 85 °C

Humidity: 5%~95% (Non-condensing)



Loopback assembly



TYPE

- Loopback assembly SC SM
- Loopback assembly SC MM

P/N

- JFLB-1PS
- JFLB-1PM

TYPE

- Loopback assembly LC SM
- Loopback assembly LC MM

P/N

- JFLB-2PS
- JFLB-2PM



TYPE

- Loopback assembly MTRJ SM
- Loopback assembly MTRJ MM

P/N

- JFLB-5PS
- JFLB-5PM



DESCRIPTION

Fiber Optic Loopbacks are designed to provide a media of return patch for a fiberoptic signal; typically it is used for fiber optic testing applications or network restorations. For the testing applications, the loopback signal is used for diagnosing a problem. Sending a loopback test to network equipment, one at a time, is a technique for isolating a problem.

Similar as fiberoptic patch cords, fiber optic loopbacks can be with various jacket types and cable diameters, and they can be with different terminations and length. Shenzhen Jiafu makes the fiber optic loopbacks strictly according to industry standard, each of the cable is functionally tested before shipping, and we offer customized assemblies for fiber optic loopbacks such as customized connector configurations and special polished.

APPLICATION

Optical Fiber Amplifier
 Fiber Optic Sensor
 Instrumentation SC, ST, FC, LC, MTRJ
 CATV

FEATURE

Loopback cable for many test applications
 Multimode, 50/125 or 62.5/125 fiber; Singlemode, 9/125 fiber
 Connectors with precision ceramic ferrule for maximum optical performance
 Molded connector to secure connection
 Fully tested cables to ensure superior quality and durability
 Jacket Style: PVC or LSZH
 Operating Wavelength: 850 nm (Multimode), 1310 nm (Singlemode)
 Return Loss: more than 50dB (SM), more than 20dB (MM)

Test equipment

TYPE

- Pon powermeter
- Handheld multi-meter
- Optical lightsource
- Optical powermeter
- Mini-optical powermeter
- Mini-optical lightsource



Indoor fiber cable



Fiber to the home (FTTH) fiber cable



Distribution fiber cable



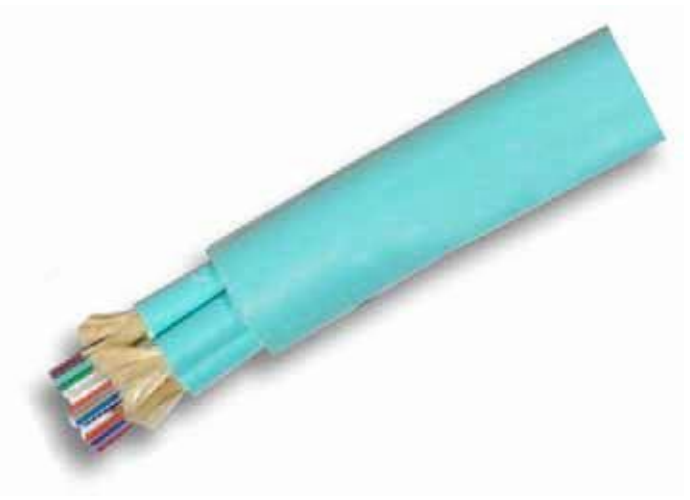
4 cores multimode fan-out fiber cable



12 cores multimode fan-out fiber cable



Multi mode fan-out fiber cable



10G fan-out fiber cable

Outdoor fiber cable



Loose tube stranded fiber cable with steel tape



All dielectric self-support fiber cable



GJFPA-8



GJFPZY-8



Armored loose tube fiber cable



Loose tube Aluminum fiber cable

Armored fiber cable



4 fiber armored cable MM



Armored cable for military (Multicore) with PU jacket



Simplex armored cable big core (105/125;200/230)SM



Simplex armored cable SM



Duplex armored cable SM



Duplex (two fibers in one tube) armored cable MM

Armored fiber cable



4 fiber armored cable SM



Simplex waterproof armored cable SM



Simplex armored cable R15 SM



Simplex armored cable MM



Armored cable for military (simplex and duplex) with PU jacket



Duplex armored cable MM